



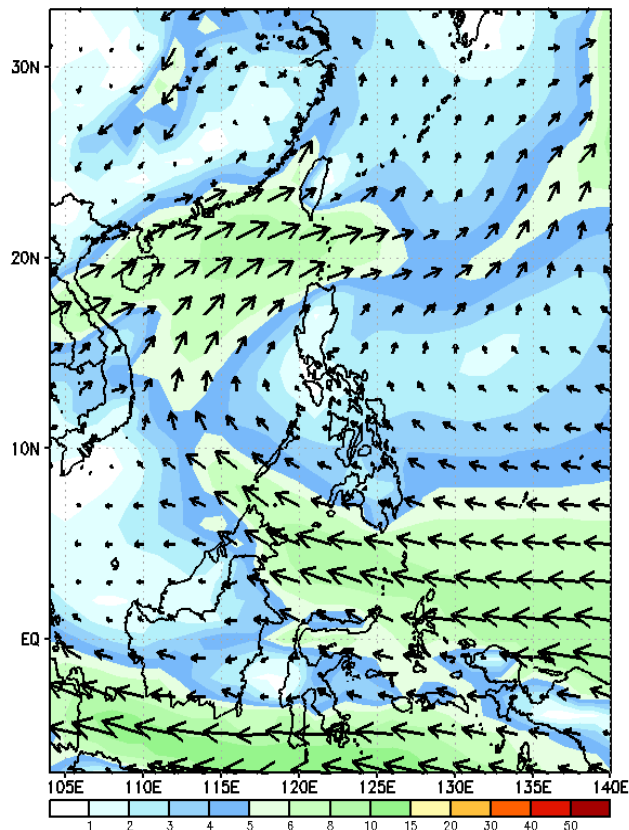
# Week 1 & Week 2 Forecast for the Philippines using GEFS Model



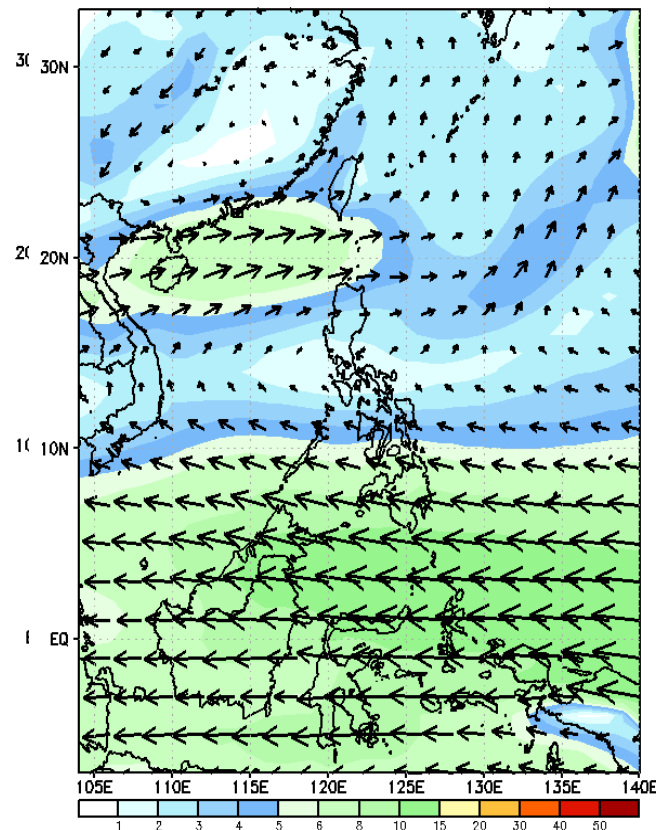
# GEFS Week-1 Wind Forecasts:

Week 1: Aug 12-18, 2024

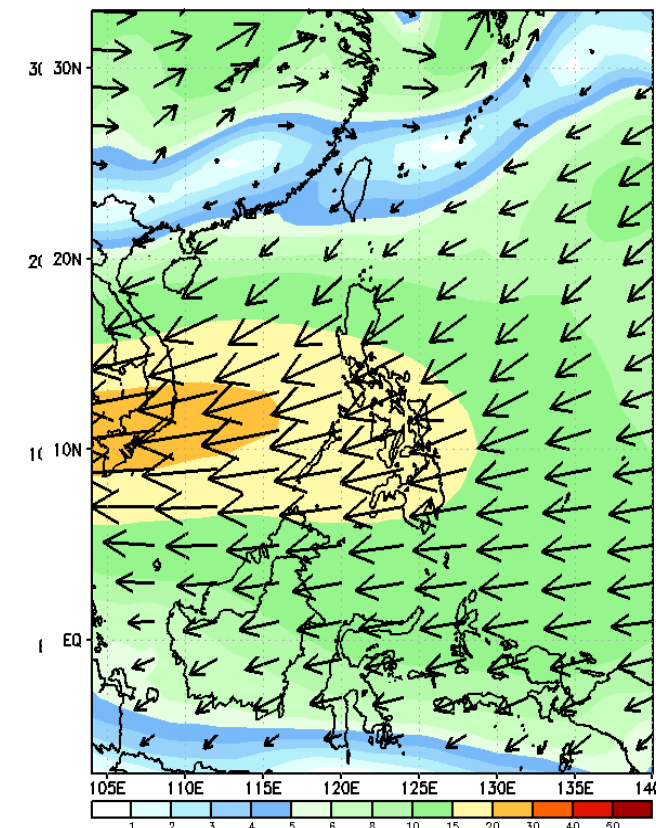
GEFS Week-1 850-hPa Wind Total  
Valid: 20240814 - 20240820



GEFS Week-1 700-hPa Wind Total  
Valid: 20240814 - 20240820

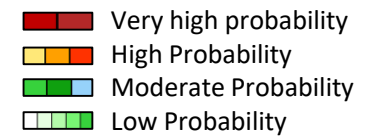


GEFS Week-1 200-hPa Wind Total  
Valid: 20240814 - 20240820



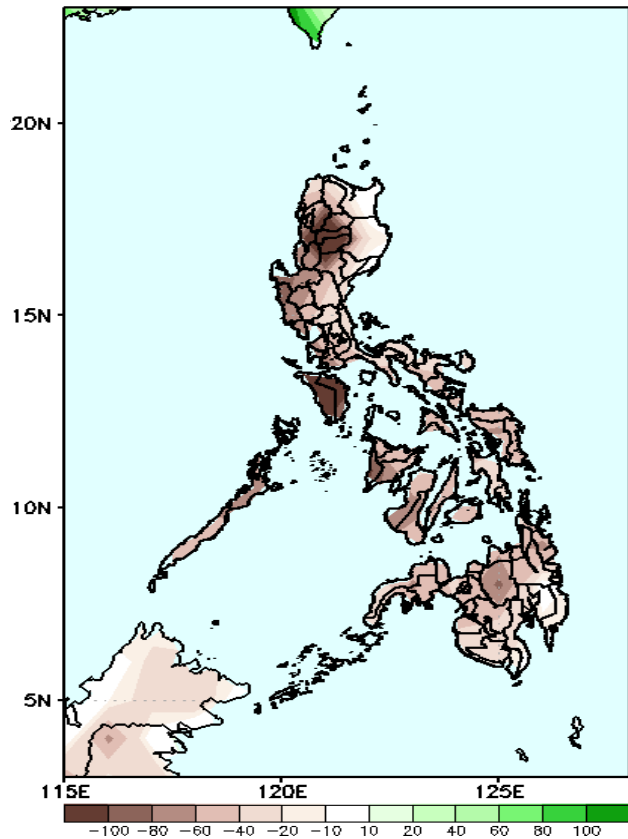
Southwest Monsoon affecting the western section of Northern and Extreme Northern Luzon.  
Easterlies affecting the rest of the country during the forecast period

# Precipitation Anomaly and Exceedance Probability > 25/50 mm



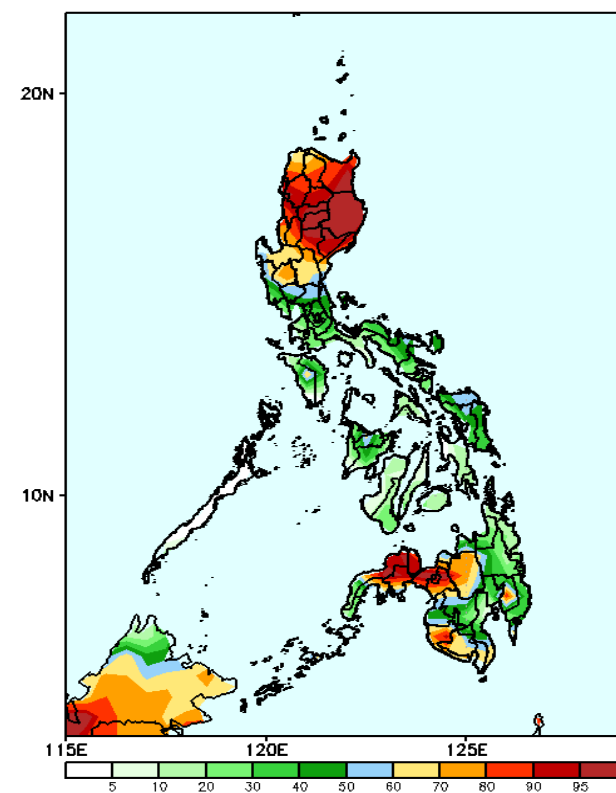
## Week 1: Aug 12-18, 2024

GEFS Week-1 Precip Anomaly  
Valid: 20240814 - 20240820



Rainfall deficit of more than 100mm in most of CAR and Mindoro Provinces and 20-80mm for the rest of the country

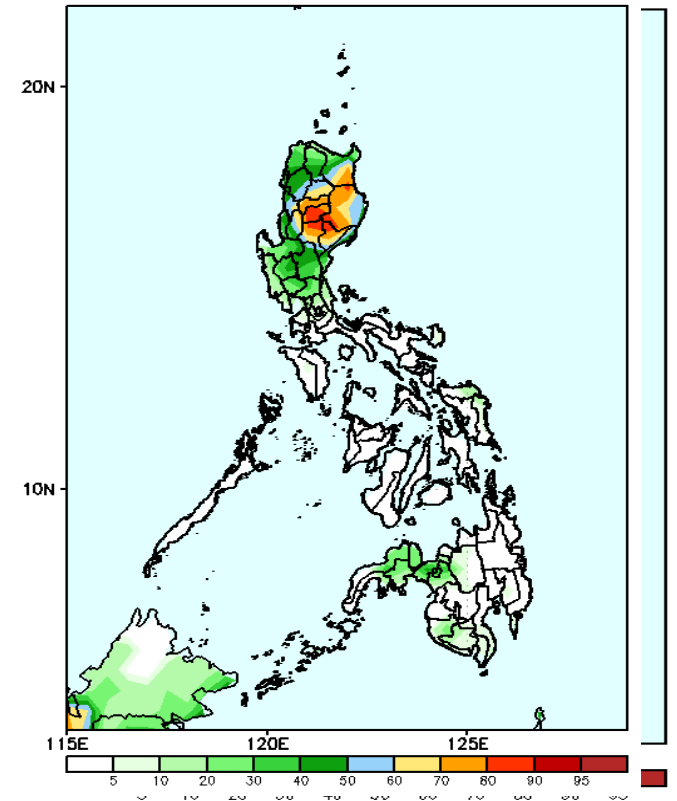
GEFS Week-1 Exceedance Prob. > 25mm  
Valid: 20240814 - 20240820



### Probability to Exceed 25mm

- High to very high over most parts of Northern Luzon, Lanao Provinces, Misamis Occidental and the eastern section of Zamboanga Peninsula;
- Moderate to high over Pangasinan, Tarlac, Nueva Ecija, Aurora, and SOCCSKSARGEN;
- Low to moderate over the rest of the country.

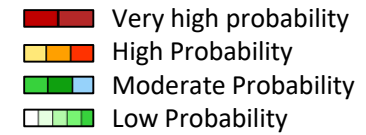
GEFS Week-1 Exceedance Prob. > 50mm  
Valid: 20240814 - 20240820



### Probability to Exceed 50mm

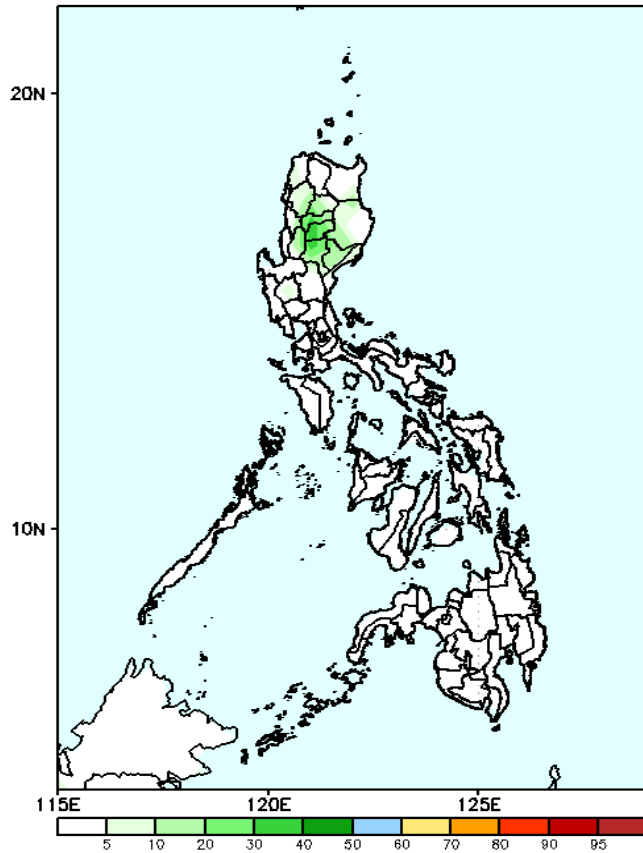
- Moderate to high over most parts of CAR, Cagayan Valley, Ilocos Sur, and La Union;
- Low to moderate over the rest of Northern Luzon and most of Central Luzon;
- Low over the rest of the country.

# Exceedance Probability > 100/150/200 mm



## Week 1: Aug 14-20, 2024

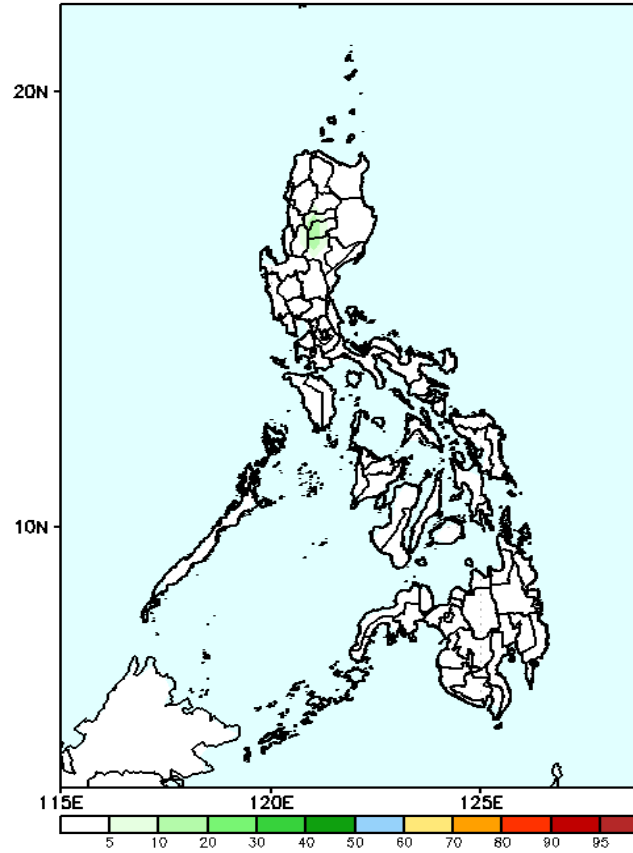
GEFS Week-1 Exceedance Prob. > 100mm  
Valid: 20240814 - 20240820



### Probability to Exceed 100mm

- Low across the country.

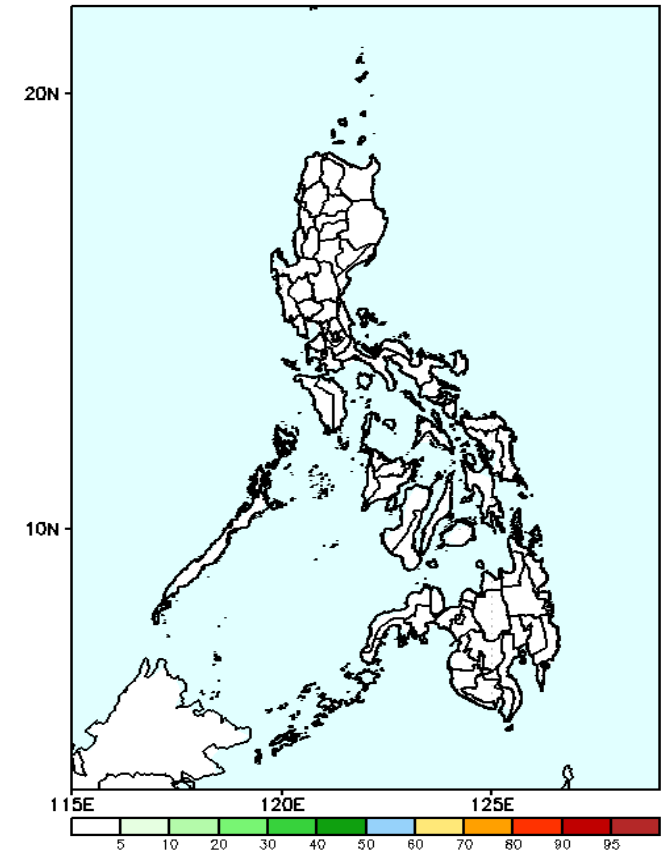
GEFS Week-1 Exceedance Prob. > 150mm  
Valid: 20240814 - 20240820



### Probability to Exceed 150mm

- Low across the country.

GEFS Week-1 Exceedance Prob. > 200mm  
Valid: 20240814 - 20240820



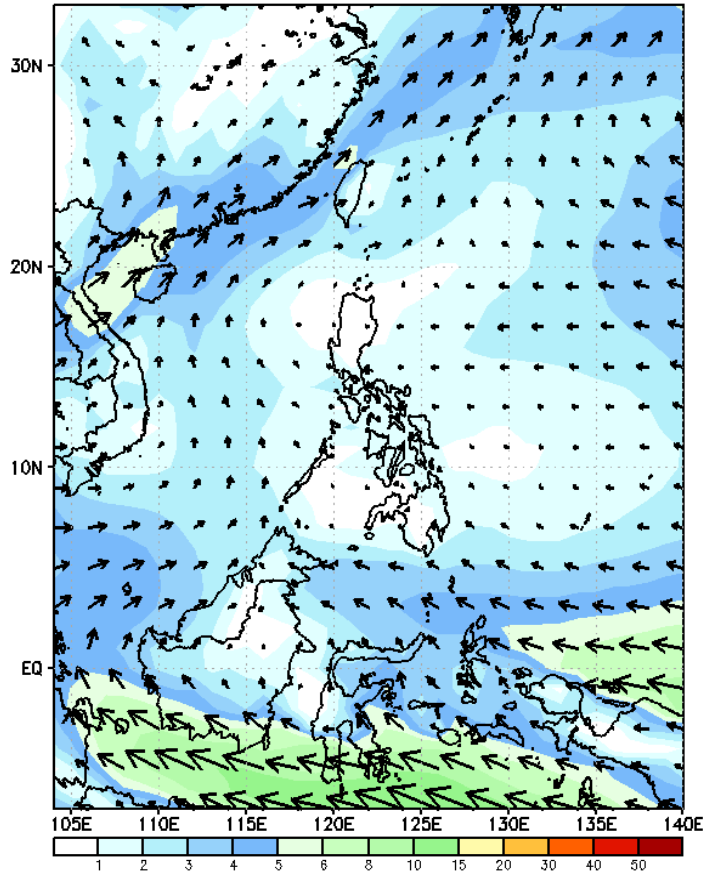
### Probability to Exceed 200mm

- Low across the country.

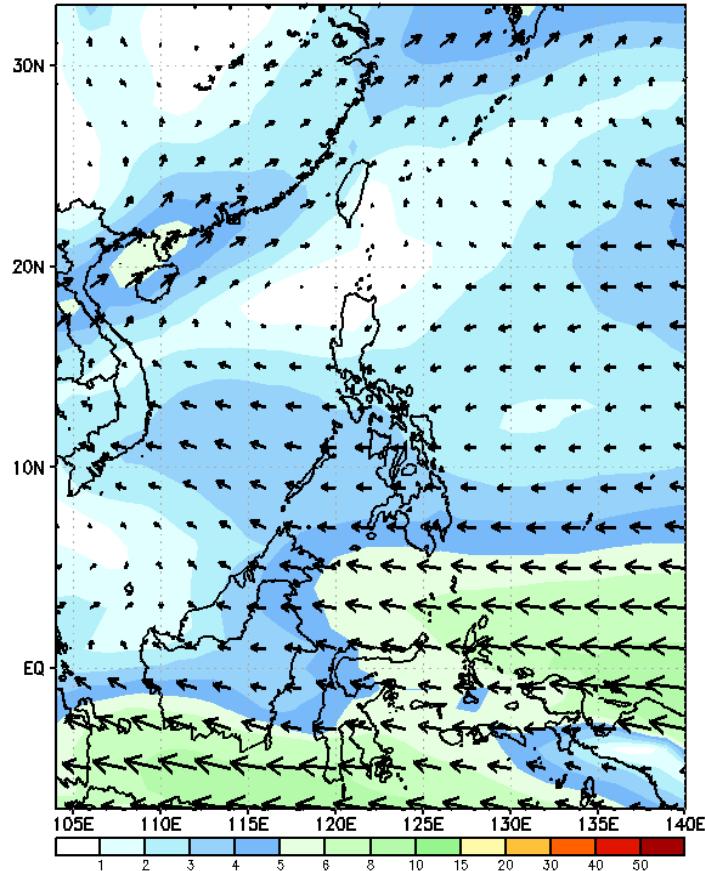
# GEFS Week-2 Wind Forecasts:

Week 2: Aug 21-27, 2024

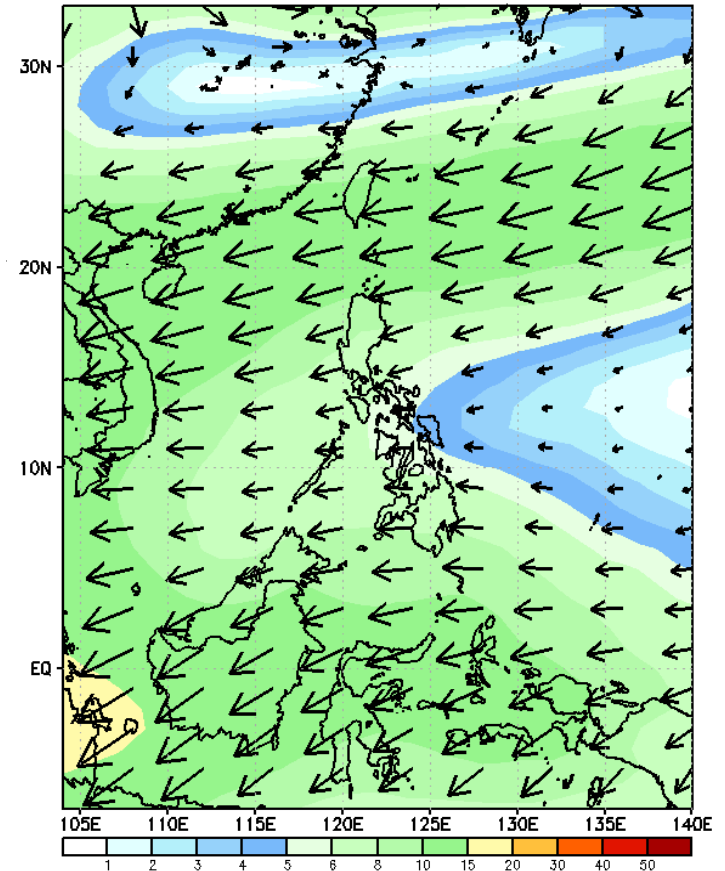
GEFS Week-2 850-hPa Wind Total  
Valid: 20240821 - 20240827



GEFS Week-2 700-hPa Wind Total  
Valid: 20240821 - 20240827

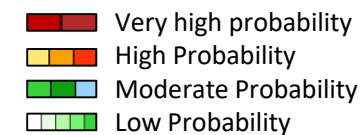


GEFS Week-2 200-hPa Wind Total  
Valid: 20240821 - 20240827



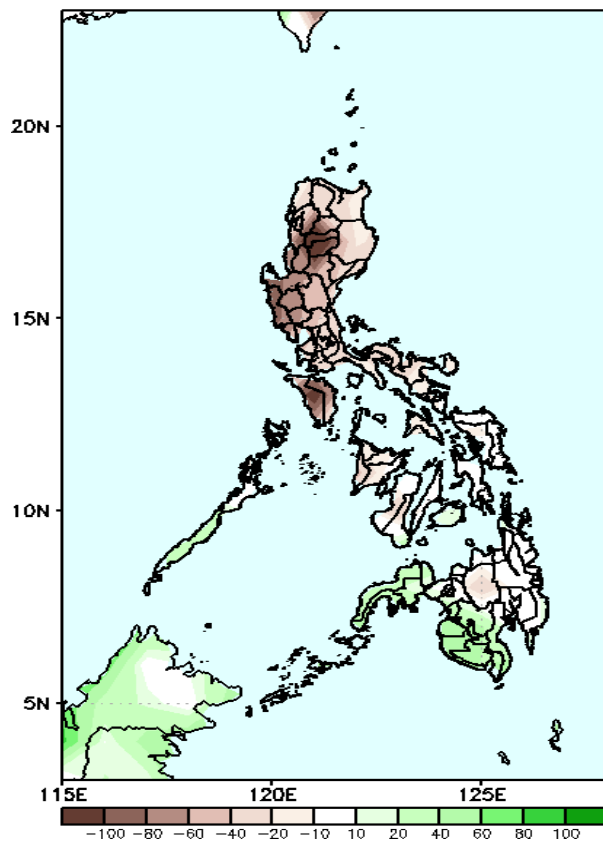
Weak Southwest Monsoon affecting some parts of Western Luzon. Easterlies affecting the rest of the country during the forecast period

# Precipitation Anomaly and Exceedance Probability > 25/50 mm



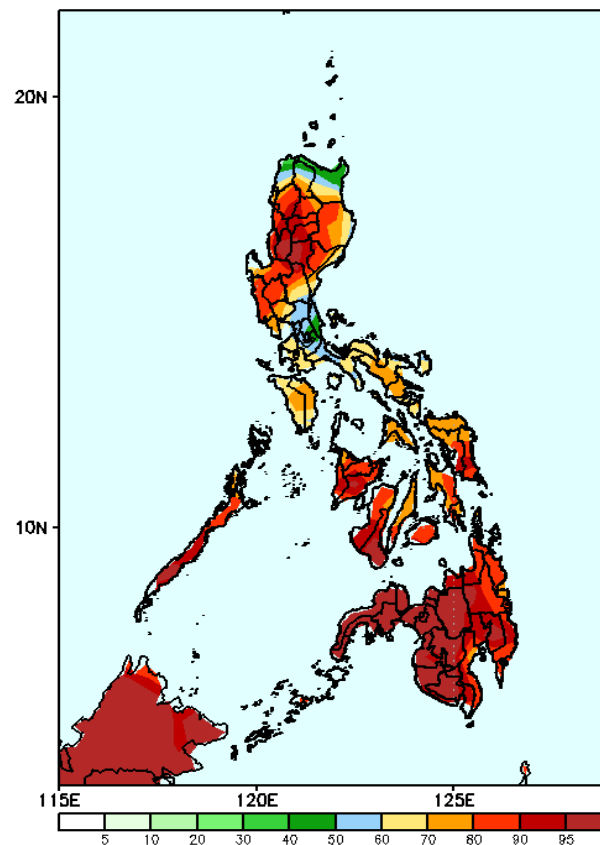
Week 2: Aug 21-27, 2024

GEFS Week-2 Precip Anomaly  
Valid: 20240821 - 20240827



Rainfall deficit of 40-100mm in most parts of Luzon, 20-40mm for Visayas and Northern and Eastern Mindanao while a rainfall increase of 20-60mm is likely in Palawan, Western Mindanao and Zamboanga Peninsula.

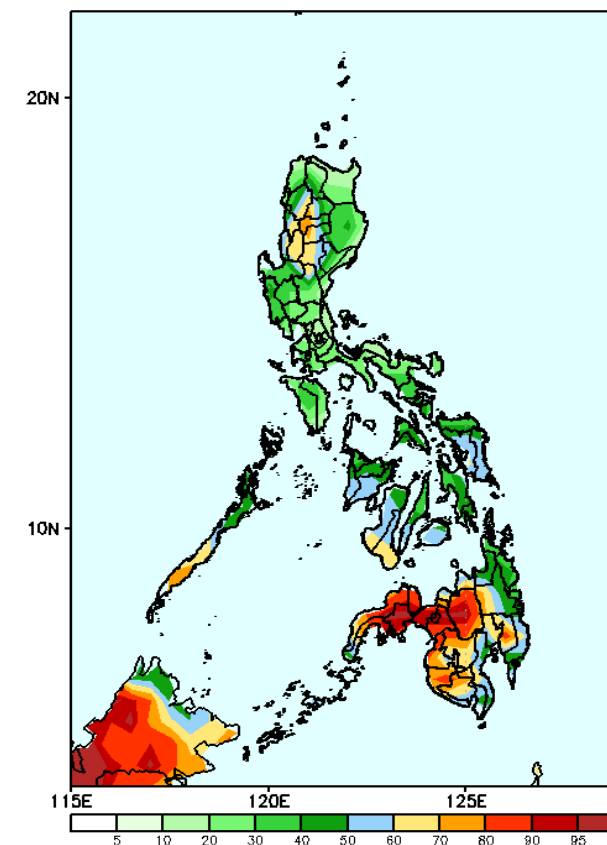
GEFS Week-2 Exceedance Prob. > 25mm  
Valid: 20240821 - 20240827



### Probability to Exceed 25mm

- High to very high over Benguet, Nueva Vizcaya, Palawan and most of Visayas and Mindanao;
- Moderate to high over the rest of Luzon.

GEFS Week-2 Exceedance Prob. > 50mm<sup>1m</sup>  
Valid: 20240821 - 20240827



### Probability to Exceed 50mm

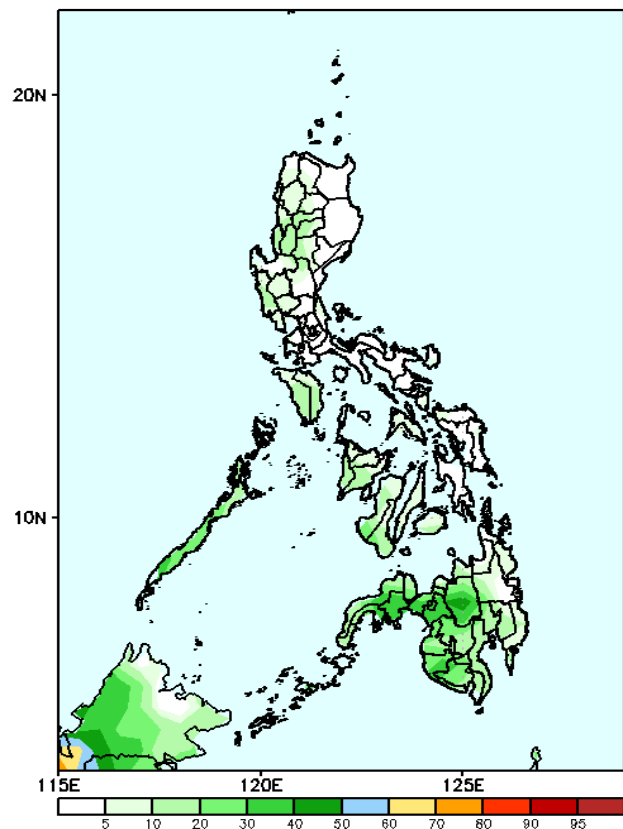
- High to very high over Bukidnon, Lanao provinces, Misamis Occidental and most of Zamboanga Peninsula;
- Moderate to high over most of CAR, Nueva Vizcaya, Palawan, Visayas and the rest of Mindanao;
- Low to moderate over the rest of Luzon.

# Exceedance Probability > 100/150/200 mm

- Very high probability
- High Probability
- Moderate Probability
- Low Probability

Week 2: Aug 21-27, 2024

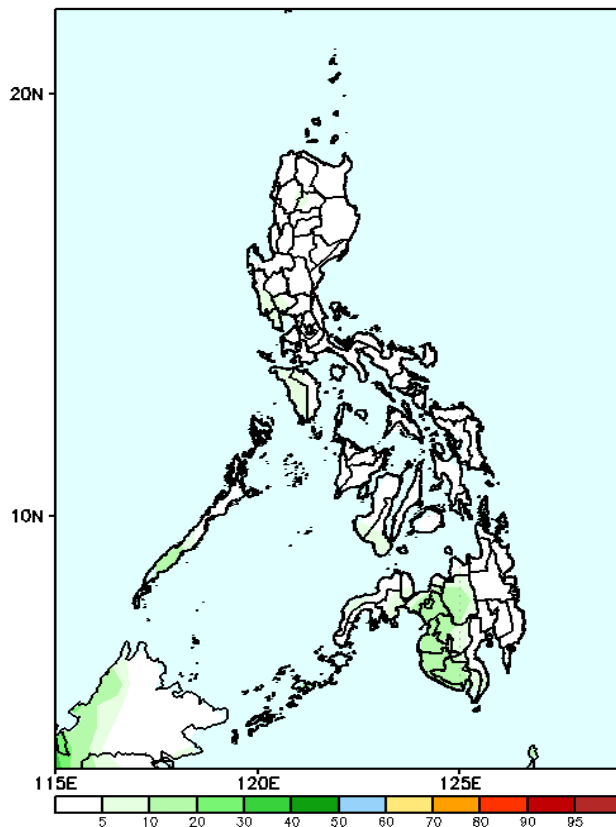
GEFS Week-2 Exceedance Prob. > 100mm  
Valid: 20240821 - 20240827



### Probability to Exceed 100mm

- Low to Moderate over the Mindanao;
- Low over the rest of the country.

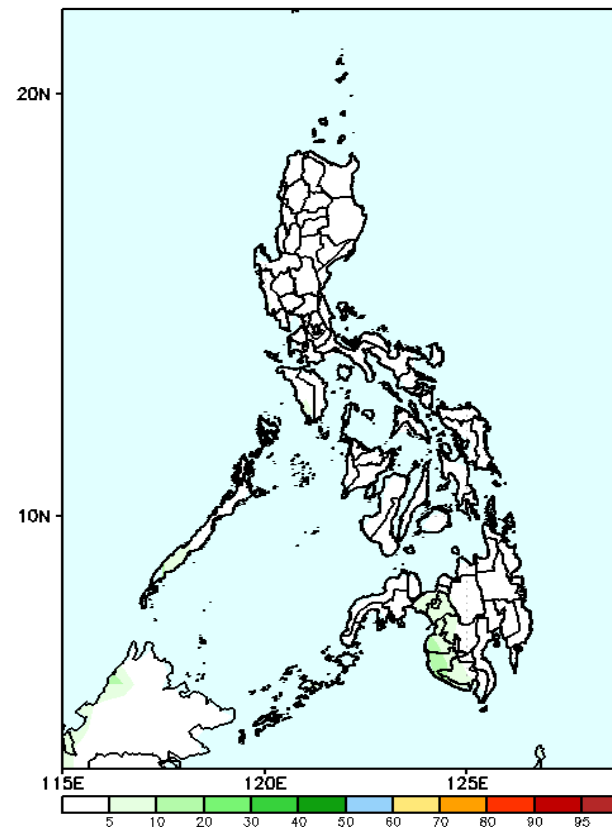
GEFS Week-2 Exceedance Prob. > 150mm  
Valid: 20240821 - 20240827



### Probability to Exceed 150mm

- Low probability across the country.

GEFS Week-2 Exceedance Prob. > 200mm  
Valid: 20240821 - 20240827

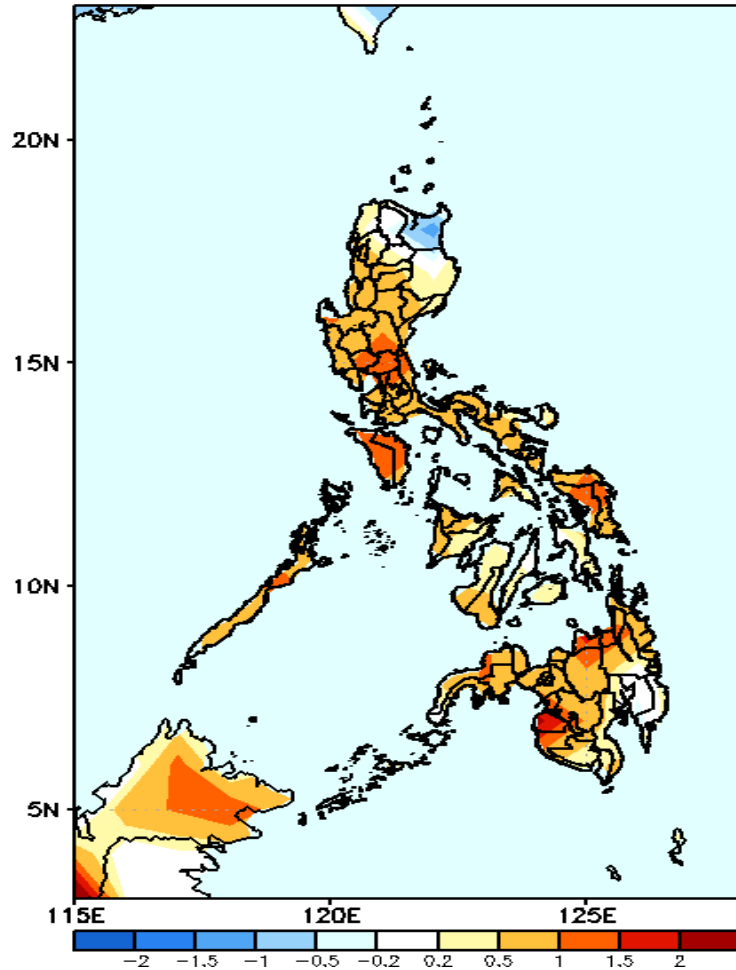


### Probability to Exceed 200mm

- Low probability across the country.

# GEFS Week-1 & 2 Forecasts: T2m Anomaly

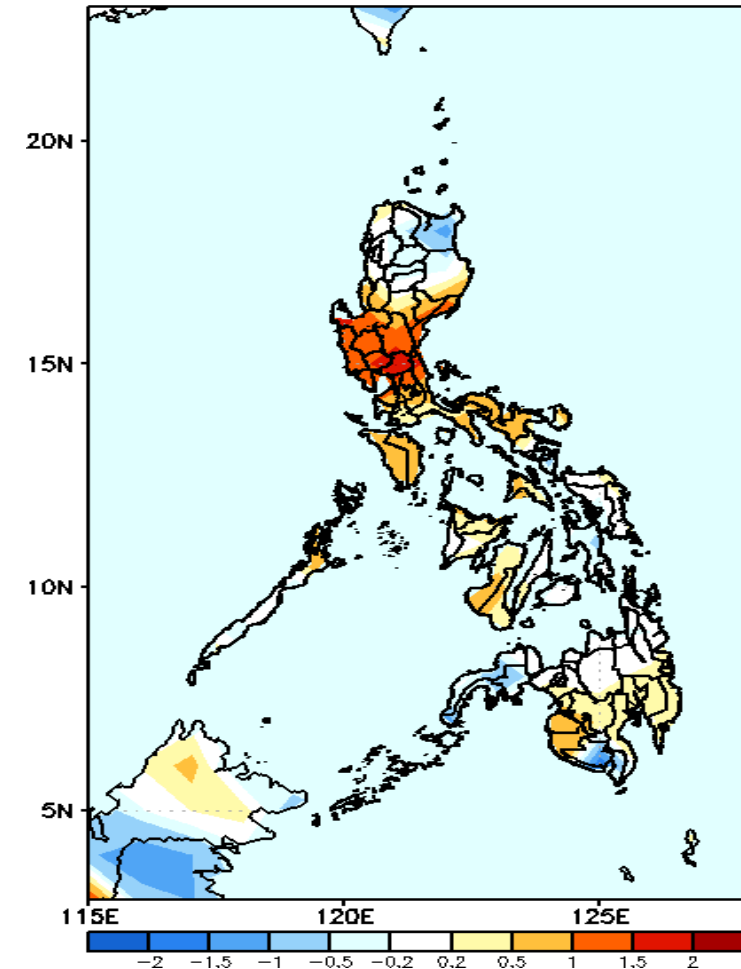
GEFS Week-1 T2m Anomaly  
Valid: 20240814 - 20240820



## 2m Temperature Week 1: Aug 14-20, 2024

Near to warmer surface air temperature will likely be experienced in most parts of the country except in Cagayan where slightly cooler than average surface air temperature is expected.

GEFS Week-2 T2m Anomaly  
Valid: 20240821 - 20240827



## 2m Temperature Week 2: Aug 21-27, 2024

Near to warmer surface air temperature will likely be experienced in most parts of the country except in Cagayan, most of CAR, South Cotabato and Zamboanga Peninsula where slightly cooler than average surface air temperature is expected.